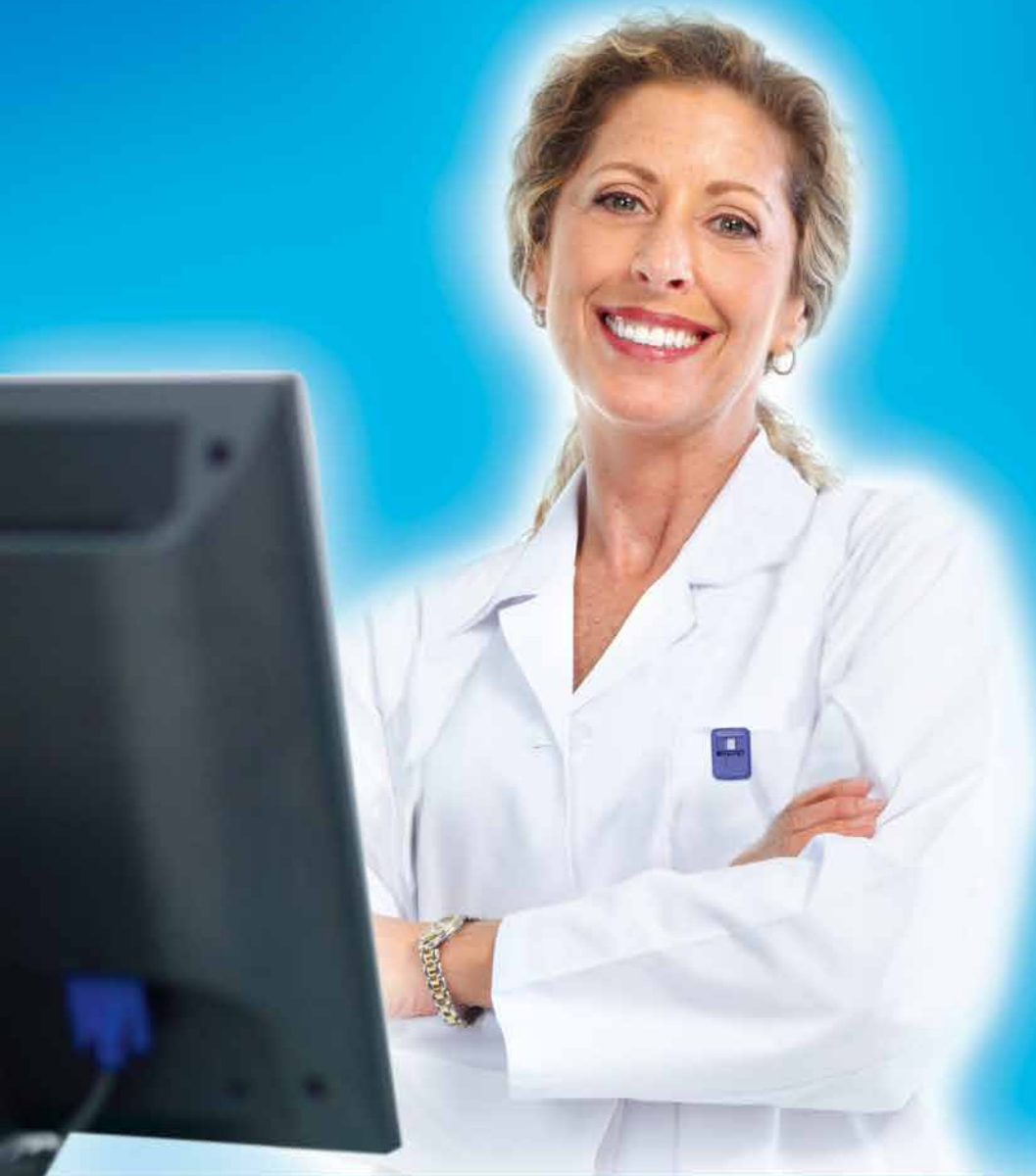




# WEB

THIN CLIENT PACS FOR STORAGE,  
ARCHIVING AND TELERADIOLOGY

## *YOUR PACS, YOUR FREEDOM*



VERSION 6.6.2





# ***THE CAREFREE, ALL-INCLUSIVE PACS***

---

*iQ-WEB is a complete, easy-to-use and affordable PACS for storing, distributing and viewing of medical imaging studies and reports.*

---

As a complete solution, the iQ-WEB PACS consists of several applications in one package:

**DICOM Server:** This application enables communication between the modalities and the archive server. It is essential for image storage, query/retrieve, forwarding, printing, as well as importing and exporting any kind of DICOM object.

**Vendor Neutral Archive:** iQ-WEB can store up to 500 million images in a single database and includes hierarchical archive support for short-term and long-term archives. When used in combination with iQ-ROUTER PRO, the archive is even more flexible and customizable. A second iQ-WEB server can automatically be synchronized to ensure up-to-date disaster recovery options.

**Web Server for an unlimited number of users:** This server allows the secure web-based distribution of any medical image and report to an unlimited number of web users, combined with efficient user management and strict authentication procedures.



**Optional Add-ons:**

There are several add-ons available for iQ-WEB which serve different medical image viewing or interfacing needs.

**iQ-4VIEW** - diagnostic zero-footprint reading at high speed for virtually any browser, operating system and device (smartphone, tablet, desktop computer)

**iQ-X** - diagnostic web viewer for reading and processing of DICOM images using Internet Explorer®

**iQ-3DVIEW** - zero-footprint tool for web-based 3D visualization of CT and MRI series

**iQ-WEB2GO** - mobile viewer for basic web-based viewing of radiology images on any tablet or smartphone

**iQ-WEBX WADO** - Interface to seamlessly integrate iQ-WEB with virtually any medical information system

**Licensing:** Depending on the user's needs, iQ-WEB allows for a variety of configurations. Options are available depending on the number of DICOM nodes that will be connected. Packages include 2, 5, 10, 20 or even an unlimited number of DICOM nodes (Application Entities). iQ-WEB can further be ordered with or without the iQ-4VIEW, iQ-X or iQ-3DVIEW web viewers.

### Special iQ-WEB Features:

**Easy Search Features:** Thanks to the innovative EasyWEB feature, physicians maintain an overview of all studies. They can easily search and filter the database individually to quickly find desired studies. Images and documents (PDF or Structured Reports) can easily be attached to a study and shared with referring physicians or colleagues.

**Web-Based Administration:** Configuration, maintenance tasks and quality monitoring of the system can be handled via a web browser with no need to be directly in front of the server.

**Web-Based Reporting:** With the optional iQ-X reporting module or with iQ-4VIEW's integrated report editor, physicians can create DICOM Structured Reports online from anywhere in the world.

**Highest Level of Privacy:** iQ-WEB is a HIPAA compliant system. Referring physicians may log in to review only their own cases while the chief radiologist can be granted access to the entire patient database. Imaging data can also be shared among physicians, while staying compliant with strict privacy regulations.

**Patient Reconciliation:** All stored studies can be verified with a DICOM WORKLIST and with optional HL7 messages. Study data can be automatically corrected in an IHE compatible protocol to ensure that consistent image data is stored in the archive.

**Web-Based DICOM Print:** Images can be printed from the web client to a remote DICOM imager.

**Email Alert Notification:** Once a new study or report is ready for viewing, the referring physician can automatically be alerted via email or text message which includes a link to the image. (This feature uses a 3rd party mail2SMS gateway service with possible additional costs).

**Referring Physician Portal:** Imaging centers can offer referring physicians access to their own cases so that they can view them anytime and anywhere without requiring additional software.

## THE SOLUTION CAN BE SO SIMPLE



# iQ-WEB SCREENSHOTS

**A** This screenshot displays the main 'Study List' interface in iQ-WEBX. The interface includes a top navigation bar with options like 'Home', 'EasyWEB', 'Unread Studies', 'Entered', 'Search', 'Job Status', 'Tools', 'Profile', and 'Help'. Below the navigation is a table of study entries. Each row represents a patient study, with columns for 'Patient Name', 'SEA', 'Study Start', 'Age', 'Patient ID', 'Study ID', 'Accession', 'Study Name', 'Study Status', 'Study Location', 'Study Site', and 'Study ID'. The table lists various studies, including those for 'Patient01' through 'Patient15', with details such as 'CT.CT - Angiogram CFA Arter', 'MRI - MRS', 'CT.CT - Angiogram CFA Arter', and 'MRI - MRS'.

**A** The iQ-WEB EasyWEB page provides quick and easy access to all studies for reading, requesting, and referring physicians.

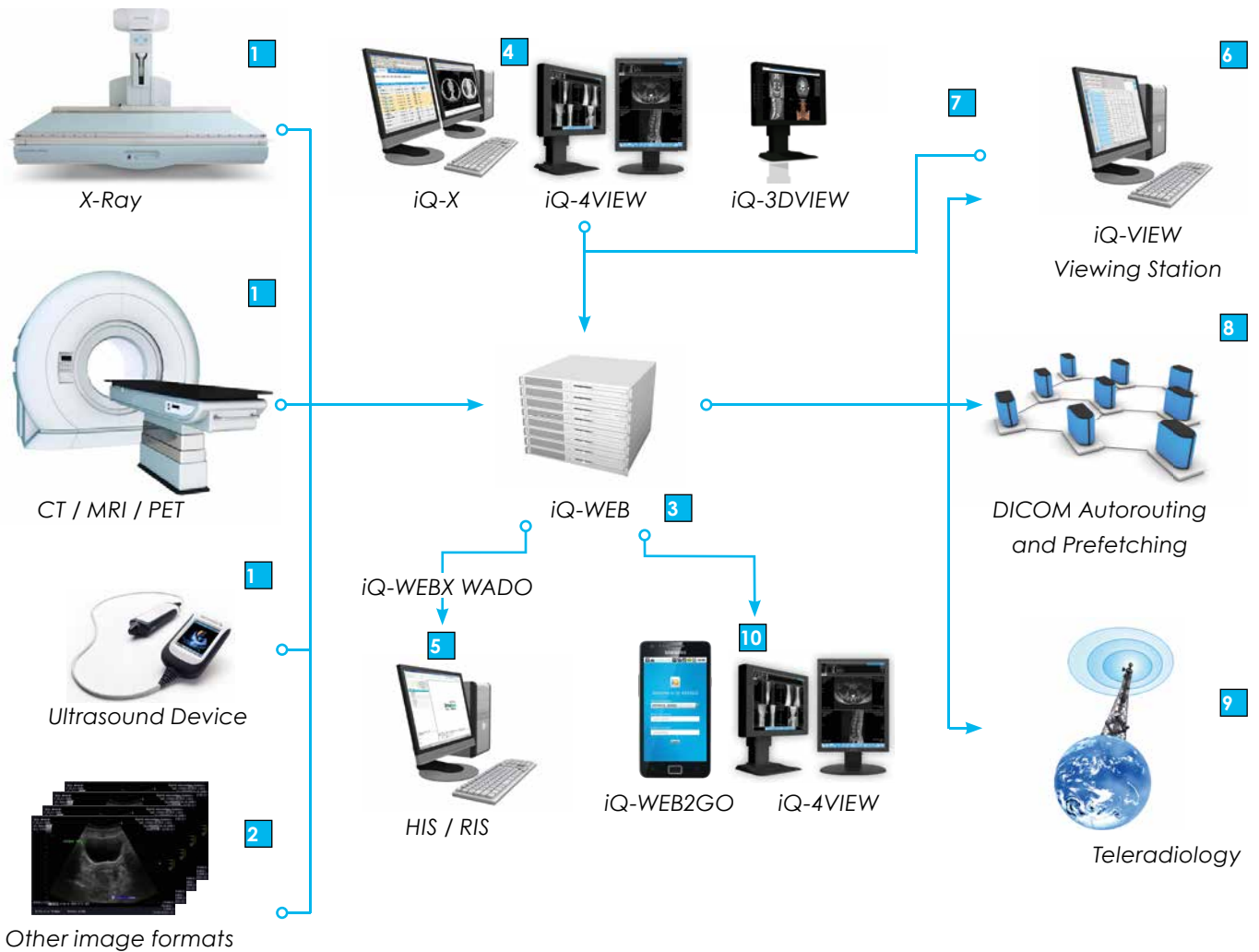
**B** This screenshot shows the 'EasyWEB' annotation interface. At the top, it displays the patient's name and study ID. Below this is a form with a 'Subject' field and a 'Description' field. A 'Keywords' field is also present, with a dropdown menu showing a list of keywords. The interface allows users to add notes and keywords to specific study entries. At the bottom, there is a 'Save' button and a 'Cancel' button.

**B** Users may annotate images or studies with individual texts, keywords, or attached documents to create teaching cases within the PACS.

**C** This screenshot displays the 'Audit Log' interface in iQ-WEBX. The interface shows a table of system activities, organized by date and user. The columns include 'Date', 'User', 'Action', 'Study ID', and 'Study Name'. The table lists activities for various users, including 'Patient01', 'Patient02', 'Patient03', 'Patient04', 'Patient05', 'Patient06', 'Patient07', 'Patient08', 'Patient09', 'Patient10', 'Patient11', 'Patient12', 'Patient13', 'Patient14', 'Patient15', 'Patient16', 'Patient17', 'Patient18', 'Patient19', 'Patient20', 'Patient21', 'Patient22', 'Patient23', 'Patient24', 'Patient25', 'Patient26', 'Patient27', 'Patient28', 'Patient29', 'Patient30', 'Patient31', 'Patient32', 'Patient33', 'Patient34', 'Patient35', 'Patient36', 'Patient37', 'Patient38', 'Patient39', 'Patient40', 'Patient41', 'Patient42', 'Patient43', 'Patient44', 'Patient45', 'Patient46', 'Patient47', 'Patient48', 'Patient49', 'Patient50', 'Patient51', 'Patient52', 'Patient53', 'Patient54', 'Patient55', 'Patient56', 'Patient57', 'Patient58', 'Patient59', 'Patient60', 'Patient61', 'Patient62', 'Patient63', 'Patient64', 'Patient65', 'Patient66', 'Patient67', 'Patient68', 'Patient69', 'Patient70', 'Patient71', 'Patient72', 'Patient73', 'Patient74', 'Patient75', 'Patient76', 'Patient77', 'Patient78', 'Patient79', 'Patient80', 'Patient81', 'Patient82', 'Patient83', 'Patient84', 'Patient85', 'Patient86', 'Patient87', 'Patient88', 'Patient89', 'Patient90', 'Patient91', 'Patient92', 'Patient93', 'Patient94', 'Patient95', 'Patient96', 'Patient97', 'Patient98', 'Patient99', 'Patient100', 'Patient101', 'Patient102', 'Patient103', 'Patient104', 'Patient105', 'Patient106', 'Patient107', 'Patient108', 'Patient109', 'Patient110', 'Patient111', 'Patient112', 'Patient113', 'Patient114', 'Patient115', 'Patient116', 'Patient117', 'Patient118', 'Patient119', 'Patient120', 'Patient121', 'Patient122', 'Patient123', 'Patient124', 'Patient125', 'Patient126', 'Patient127', 'Patient128', 'Patient129', 'Patient130', 'Patient131', 'Patient132', 'Patient133', 'Patient134', 'Patient135', 'Patient136', 'Patient137', 'Patient138', 'Patient139', 'Patient140', 'Patient141', 'Patient142', 'Patient143', 'Patient144', 'Patient145', 'Patient146', 'Patient147', 'Patient148', 'Patient149', 'Patient150', 'Patient151', 'Patient152', 'Patient153', 'Patient154', 'Patient155', 'Patient156', 'Patient157', 'Patient158', 'Patient159', 'Patient160', 'Patient161', 'Patient162', 'Patient163', 'Patient164', 'Patient165', 'Patient166', 'Patient167', 'Patient168', 'Patient169', 'Patient170', 'Patient171', 'Patient172', 'Patient173', 'Patient174', 'Patient175', 'Patient176', 'Patient177', 'Patient178', 'Patient179', 'Patient180', 'Patient181', 'Patient182', 'Patient183', 'Patient184', 'Patient185', 'Patient186', 'Patient187', 'Patient188', 'Patient189', 'Patient190', 'Patient191', 'Patient192', 'Patient193', 'Patient194', 'Patient195', 'Patient196', 'Patient197', 'Patient198', 'Patient199', 'Patient200', 'Patient201', 'Patient202', 'Patient203', 'Patient204', 'Patient205', 'Patient206', 'Patient207', 'Patient208', 'Patient209', 'Patient210', 'Patient211', 'Patient212', 'Patient213', 'Patient214', 'Patient215', 'Patient216', 'Patient217', 'Patient218', 'Patient219', 'Patient220', 'Patient221', 'Patient222', 'Patient223', 'Patient224', 'Patient225', 'Patient226', 'Patient227', 'Patient228', 'Patient229', 'Patient230', 'Patient231', 'Patient232', 'Patient233', 'Patient234', 'Patient235', 'Patient236', 'Patient237', 'Patient238', 'Patient239', 'Patient240', 'Patient241', 'Patient242', 'Patient243', 'Patient244', 'Patient245', 'Patient246', 'Patient247', 'Patient248', 'Patient249', 'Patient250', 'Patient251', 'Patient252', 'Patient253', 'Patient254', 'Patient255', 'Patient256', 'Patient257', 'Patient258', 'Patient259', 'Patient260', 'Patient261', 'Patient262', 'Patient263', 'Patient264', 'Patient265', 'Patient266', 'Patient267', 'Patient268', 'Patient269', 'Patient270', 'Patient271', 'Patient272', 'Patient273', 'Patient274', 'Patient275', 'Patient276', 'Patient277', 'Patient278', 'Patient279', 'Patient280', 'Patient281', 'Patient282', 'Patient283', 'Patient284', 'Patient285', 'Patient286', 'Patient287', 'Patient288', 'Patient289', 'Patient290', 'Patient291', 'Patient292', 'Patient293', 'Patient294', 'Patient295', 'Patient296', 'Patient297', 'Patient298', 'Patient299', 'Patient300', 'Patient301', 'Patient302', 'Patient303', 'Patient304', 'Patient305', 'Patient306', 'Patient307', 'Patient308', 'Patient309', 'Patient310', 'Patient311', 'Patient312', 'Patient313', 'Patient314', 'Patient315', 'Patient316', 'Patient317', 'Patient318', 'Patient319', 'Patient320', 'Patient321', 'Patient322', 'Patient323', 'Patient324', 'Patient325', 'Patient326', 'Patient327', 'Patient328', 'Patient329', 'Patient330', 'Patient331', 'Patient332', 'Patient333', 'Patient334', 'Patient335', 'Patient336', 'Patient337', 'Patient338', 'Patient339', 'Patient340', 'Patient341', 'Patient342', 'Patient343', 'Patient344', 'Patient345', 'Patient346', 'Patient347', 'Patient348', 'Patient349', 'Patient350', 'Patient351', 'Patient352', 'Patient353', 'Patient354', 'Patient355', 'Patient356', 'Patient357', 'Patient358', 'Patient359', 'Patient360', 'Patient361', 'Patient362', 'Patient363', 'Patient364', 'Patient365', 'Patient366', 'Patient367', 'Patient368', 'Patient369', 'Patient370', 'Patient371', 'Patient372', 'Patient373', 'Patient374', 'Patient375', 'Patient376', 'Patient377', 'Patient378', 'Patient379', 'Patient380', 'Patient381', 'Patient382', 'Patient383', 'Patient384', 'Patient385', 'Patient386', 'Patient387', 'Patient388', 'Patient389', 'Patient390', 'Patient391', 'Patient392', 'Patient393', 'Patient394', 'Patient395', 'Patient396', 'Patient397', 'Patient398', 'Patient399', 'Patient400', 'Patient401', 'Patient402', 'Patient403', 'Patient404', 'Patient405', 'Patient406', 'Patient407', 'Patient408', 'Patient409', 'Patient410', 'Patient411', 'Patient412', 'Patient413', 'Patient414', 'Patient415', 'Patient416', 'Patient417', 'Patient418', 'Patient419', 'Patient420', 'Patient421', 'Patient422', 'Patient423', 'Patient424', 'Patient425', 'Patient426', 'Patient427', 'Patient428', 'Patient429', 'Patient430', 'Patient431', 'Patient432', 'Patient433', 'Patient434', 'Patient435', 'Patient436', 'Patient437', 'Patient438', 'Patient439', 'Patient440', 'Patient441', 'Patient442', 'Patient443', 'Patient444', 'Patient445', 'Patient446', 'Patient447', 'Patient448', 'Patient449', 'Patient450', 'Patient451', 'Patient452', 'Patient453', 'Patient454', 'Patient455', 'Patient456', 'Patient457', 'Patient458', 'Patient459', 'Patient460', 'Patient461', 'Patient462', 'Patient463', 'Patient464', 'Patient465', 'Patient466', 'Patient467', 'Patient468', 'Patient469', 'Patient470', 'Patient471', 'Patient472', 'Patient473', 'Patient474', 'Patient475', 'Patient476', 'Patient477', 'Patient478', 'Patient479', 'Patient480', 'Patient481', 'Patient482', 'Patient483', 'Patient484', 'Patient485', 'Patient486', 'Patient487', 'Patient488', 'Patient489', 'Patient490', 'Patient491', 'Patient492', 'Patient493', 'Patient494', 'Patient495', 'Patient496', 'Patient497', 'Patient498', 'Patient499', 'Patient500', 'Patient501', 'Patient502', 'Patient503', 'Patient504', 'Patient505', 'Patient506', 'Patient507', 'Patient508', 'Patient509', 'Patient510', 'Patient511', 'Patient512', 'Patient513', 'Patient514', 'Patient515', 'Patient516', 'Patient517', 'Patient518', 'Patient519', 'Patient520', 'Patient521', 'Patient522', 'Patient523', 'Patient524', 'Patient525', 'Patient526', 'Patient527', 'Patient528', 'Patient529', 'Patient530', 'Patient531', 'Patient532', 'Patient533', 'Patient534', 'Patient535', 'Patient536', 'Patient537', 'Patient538', 'Patient539', 'Patient540', 'Patient541', 'Patient542', 'Patient543', 'Patient544', 'Patient545', 'Patient546', 'Patient547', 'Patient548', 'Patient549', 'Patient550', 'Patient551', 'Patient552', 'Patient553', 'Patient554', 'Patient555', 'Patient556', 'Patient557', 'Patient558', 'Patient559', 'Patient560', 'Patient561', 'Patient562', 'Patient563', 'Patient564', 'Patient565', 'Patient566', 'Patient567', 'Patient568', 'Patient569', 'Patient570', 'Patient571', 'Patient572', 'Patient573', 'Patient574', 'Patient575', 'Patient576', 'Patient577', 'Patient578', 'Patient579', 'Patient580', 'Patient581', 'Patient582', 'Patient583', 'Patient584', 'Patient585', 'Patient586', 'Patient587', 'Patient588', 'Patient589', 'Patient590', 'Patient591', 'Patient592', 'Patient593', 'Patient594', 'Patient595', 'Patient596', 'Patient597', 'Patient598', 'Patient599', 'Patient600', 'Patient601', 'Patient602', 'Patient603', 'Patient604', 'Patient605', 'Patient606', 'Patient607', 'Patient608', 'Patient609', 'Patient610', 'Patient611', 'Patient612', 'Patient613', 'Patient614', 'Patient615', 'Patient616', 'Patient617', 'Patient618', 'Patient619', 'Patient620', 'Patient621', 'Patient622', 'Patient623', 'Patient624', 'Patient625', 'Patient626', 'Patient627', 'Patient628', 'Patient629', 'Patient630', 'Patient631', 'Patient632', 'Patient633', 'Patient634', 'Patient635', 'Patient636', 'Patient637', 'Patient638', 'Patient639', 'Patient640', 'Patient641', 'Patient642', 'Patient643', 'Patient644', 'Patient645', 'Patient646', 'Patient647', 'Patient648', 'Patient649', 'Patient650', 'Patient651', 'Patient652', 'Patient653', 'Patient654', 'Patient655', 'Patient656', 'Patient657', 'Patient658', 'Patient659', 'Patient660', 'Patient661', 'Patient662', 'Patient663', 'Patient664', 'Patient665', 'Patient666', 'Patient667', 'Patient668', 'Patient669', 'Patient670', 'Patient671', 'Patient672', 'Patient673', 'Patient674', 'Patient675', 'Patient676', 'Patient677', 'Patient678', 'Patient679', 'Patient680', 'Patient681', 'Patient682', 'Patient683', 'Patient684', 'Patient685', 'Patient686', 'Patient687', 'Patient688', 'Patient689', 'Patient690', 'Patient691', 'Patient692', 'Patient693', 'Patient694', 'Patient695', 'Patient696', 'Patient697', 'Patient698', 'Patient699', 'Patient700', 'Patient701', 'Patient702', 'Patient703', 'Patient704', 'Patient705', 'Patient706', 'Patient707', 'Patient708', 'Patient709', 'Patient710', 'Patient711', 'Patient712', 'Patient713', 'Patient714', 'Patient715', 'Patient716', 'Patient717', 'Patient718', 'Patient719', 'Patient720', 'Patient721', 'Patient722', 'Patient723', 'Patient724', 'Patient725', 'Patient726', 'Patient727', 'Patient728', 'Patient729', 'Patient730', 'Patient731', 'Patient732', 'Patient733', 'Patient734', 'Patient735', 'Patient736', 'Patient737', 'Patient738', 'Patient739', 'Patient740', 'Patient741', 'Patient742', 'Patient743', 'Patient744', 'Patient745', 'Patient746', 'Patient747', 'Patient748', 'Patient749', 'Patient750', 'Patient751', 'Patient752', 'Patient753', 'Patient754', 'Patient755', 'Patient756', 'Patient757', 'Patient758', 'Patient759', 'Patient760', 'Patient761', 'Patient762', 'Patient763', 'Patient764', 'Patient765', 'Patient766', 'Patient767', 'Patient768', 'Patient769', 'Patient770', 'Patient771', 'Patient772', 'Patient773', 'Patient774', 'Patient775', 'Patient776', 'Patient777', 'Patient778', 'Patient779', 'Patient780', 'Patient781', 'Patient782', 'Patient783', 'Patient784', 'Patient785', 'Patient786', 'Patient787', 'Patient788', 'Patient789', 'Patient790', 'Patient791', 'Patient792', 'Patient793', 'Patient794', 'Patient795', 'Patient796', 'Patient797', 'Patient798', 'Patient799', 'Patient800', 'Patient801', 'Patient802', 'Patient803', 'Patient804', 'Patient805', 'Patient806', 'Patient807', 'Patient808', 'Patient809', 'Patient810', 'Patient811', 'Patient812', 'Patient813', 'Patient814', 'Patient815', 'Patient816', 'Patient817', 'Patient818', 'Patient819', 'Patient820', 'Patient821', 'Patient822', 'Patient823', 'Patient824', 'Patient825', 'Patient826', 'Patient827', 'Patient828', 'Patient829', 'Patient830', 'Patient831', 'Patient832', 'Patient833', 'Patient834', 'Patient835', 'Patient836', 'Patient837', 'Patient838', 'Patient839', 'Patient840', 'Patient841', 'Patient842', 'Patient843', 'Patient844', 'Patient845', 'Patient846', 'Patient847', 'Patient848', 'Patient849', 'Patient850', 'Patient851', 'Patient852', 'Patient853', 'Patient854', 'Patient855', 'Patient856', 'Patient857', 'Patient858', 'Patient859', 'Patient860', 'Patient861', 'Patient862', 'Patient863', 'Patient864', 'Patient865', 'Patient866', 'Patient867', 'Patient868', 'Patient869', 'Patient870', 'Patient871', 'Patient872', 'Patient873', 'Patient874', 'Patient875', 'Patient876', 'Patient877', 'Patient878', 'Patient879', 'Patient880', 'Patient881', 'Patient882', 'Patient883', 'Patient884', 'Patient885', 'Patient886', 'Patient887', 'Patient888', 'Patient889', 'Patient890', 'Patient891', 'Patient892', 'Patient893', 'Patient894', 'Patient895', 'Patient896', 'Patient897', 'Patient898', 'Patient899', 'Patient900', 'Patient901', 'Patient902', 'Patient903', 'Patient904', 'Patient905', 'Patient906', 'Patient907', 'Patient908', 'Patient909', 'Patient910', 'Patient911', 'Patient912', 'Patient913', 'Patient914', 'Patient915', 'Patient916', 'Patient917', 'Patient918', 'Patient919', 'Patient920', 'Patient921', 'Patient922', 'Patient923', 'Patient924', 'Patient925', 'Patient926', 'Patient927', 'Patient928', 'Patient929', 'Patient930', 'Patient931', 'Patient932', 'Patient933', 'Patient934', 'Patient935', 'Patient936', 'Patient937', 'Patient938', 'Patient939', 'Patient940', 'Patient941', 'Patient942', 'Patient943', 'Patient944', 'Patient945', 'Patient946', 'Patient947', 'Patient948', 'Patient949', 'Patient950', 'Patient951', 'Patient952', 'Patient953', 'Patient954', 'Patient955', 'Patient956', 'Patient957', 'Patient958', 'Patient959', 'Patient960', 'Patient961', 'Patient962', 'Patient963', 'Patient964', 'Patient965', 'Patient966', 'Patient967', 'Patient968', 'Patient969', 'Patient970', 'Patient971', 'Patient972', 'Patient973', 'Patient974', 'Patient975', 'Patient976', 'Patient977', 'Patient978', 'Patient979', 'Patient980', 'Patient981', 'Patient982', 'Patient983', 'Patient984', 'Patient985', 'Patient986', 'Patient987', 'Patient988', 'Patient989', 'Patient990', 'Patient991', 'Patient992', 'Patient993', 'Patient994', 'Patient995', 'Patient996', 'Patient997', 'Patient998', 'Patient999', 'Patient1000'. The table lists various system activities, including 'Add Study', 'Delete Study', 'Update Study', 'View Study', 'Print Study', 'Download Study', 'Upload Study', 'Delete Keyword', 'Add Keyword', 'Update Keyword', 'View Keyword', 'Print Keyword', 'Download Keyword', 'Upload Keyword', 'Delete Document', 'Add Document', 'Update Document', 'View Document', 'Print Document', 'Download Document', 'Upload Document', 'Delete User', 'Add User', 'Update User', 'View User', 'Print User', 'Download User', 'Upload User', 'Delete Role', 'Add Role', 'Update Role', 'View Role', 'Print Role', 'Download Role', 'Upload Role', 'Delete System', 'Add System', 'Update System', 'View System', 'Print System', 'Download System', 'Upload System'.

**C** iQ-WEB logs system activities in compliance with HIPAA regulations.

# iQ-WEB WORKFLOW



- 1** iQ-WEB is typically connected to all DICOM modalities in an imaging network, such as X-Ray, PET/CT/MRI and Ultrasound.
- 2** iQ-WEB supports a wide variety of image formats which are specified in the respective DICOM Conformance Statement.
- 3** As a vendor neutral archiving system, iQ-WEB serves as the core of an imaging network, offering advanced features such as automatic patient reconciliation when paired with any hospital information system via a worklist or HL7 messaging.
- 4** The optional viewers iQ-4VIEW, iQ-X and iQ-3DVIEW allow medical images to be viewed in diagnostic quality.

- 5** iQ-4VIEW and iQ-X can be seamlessly integrated with virtually any medical information system using the optional iQ-WEBX WADO interface.
- 6** Reading stations, such as iQ-VIEW, can be connected directly to iQ-WEB using DICOM communication.
- 7** Structured Reports can be created using iQ-VIEW or the integrated iQ-4VIEW and iQ-X viewers. Reports obtained from hospital information systems can be received via the optional iQ-WEBX REPORT CONVERTER module.

- 8** The intelligent autorouting feature forwards studies based on predefined criteria to any DICOM compliant station. Even prefetching previous studies for the same patient can be included, if desired.
- 9** Efficient teleradiology connections are achieved by built-in data compression algorithms, allowing iQ-4VIEW and iQ-X users fast access to images and return of reports.
- 10** The optional iQ-WEB2GO module facilitates radiology viewing via mobile devices for fast and easy access to medical images from anywhere.

---

## SERVER

- Server instance monitoring
- Enhanced server statistics (e.g. studies received from DICOM nodes or institutions per period) (NEW!)
- Automatic patient reconciliation via worklist or HL7
- Complete 64 bit architecture for high-performance scalability

---

## COMMUNICATION

- DICOM PRINT and DICOM WORKLIST clients
- Rule-based auto-forwarding of data sets
- Emergency management with priority routing
- Restricted forwarding to user-selected AE titles
- Enhanced auto-routing due to advanced scheduling options
- HL7 interface (optional)
- WADO (web access to DICOM objects) (optional)
- Email notification when new study has arrived
- Sends images as JPEG via email
- Breast tomosynthesis support

---

## WEB

- Unlimited number of users and concurrent users by default
- Access portal for referring physicians and patients\*\*
- Automatic browser detection in the EasyWEB page
- Can open studies in iQ-VIEW from EasyWEB page
- Displays all color/grayscale images and structured reports
- Web-based query of external DICOM archives
- Web-based transfer of images to DICOM destinations
- Attach files and notes to images or studies
- Web-based DICOM MPEG video management (NEW!)
- Additional Coercion rule trigger by defined DICOM tags (e.g. institution name, involved physician, modality) (NEW!)
- Supported character sets (only one character set at a time):
  - GB18030 Simplified Chinese, ISO 2022 IR 149 (Korean), ISO 2022 IR 13 (Japanese JIS X 0201), ISO 2022 IR 87 (Japanese JIS X 0208), ISO 2022 IR 159 (Japanese JIS X 0212), ISO\_IR 192 (Unicode), ISO\_IR 100 (Latin Alphabet Part 1), ISO\_IR 101 (Latin Alphabet Part 2), ISO\_IR 109 (Latin Alphabet Part 3), ISO\_IR 110 (Latin Alphabet Part 4), ISO\_IR 144 (Russian), ISO\_IR 127 (Arab), ISO\_IR 126 (Greek), ISO\_IR 138 (Hebrew Logical Order), ISO\_IR 148 (Latin Alphabet Part 5)

\* Detailed information on iQ-WEB's system requirements is available in the iQ-WEB Administration Guide or the Hardware Purchasing Guide.

\*\* Subject to properly filled DICOM data

\*\*\* Depending on hardware and database system used

## IMPORT/EXPORT

- Web-based import of any DICOM media
- DICOM export function

## DATABASE

- 64 bit MySQL
- Automatic synchronization with other DICOM servers
- Configurable overflow management (high water/low water, study date, custom settings)
- Stores up to 500 million images\*\*\*

## DATA AND USER MANAGEMENT & SECURITY

- User login credential synchronization from active directory via LDAP (NEW!)
- 16 different privilege settings for each user/group
- User access control
- Enhanced user rights management (e.g. multiple user access filter, user assignment based on AE title)
- Definition of password complexity rules
- User blocking after more than 5 failed login attempts (2 hours)

## CYBER SECURITY

- Effective protection against cyber attacks by
  - Enhanced email functionality (transmission via SSL/TLS protocol) (NEW!)
  - Update of the web server components (NEW!)
  - Support of MySQL 5.7 (NEW!)

## LANGUAGE

- English, German, Russian, Spanish (included by default), other languages upon request

## LICENSING

- Available for 2, 5, 10, 15, 20 or an unlimited number of DICOM nodes

## COMPATIBILITY

- iQ-WEB 6.6.2 is compatible and available in one setup with:
  - iQ-4VIEW 2.1
  - iQ-X 2.2
  - iQ-WEB2GO 1.2
  - iQ-WEBX WADO 3.2

## CERTIFICATION

- CE 0482 and FDA 510 (k)\*



\* iQ-WEB is a component of iQ-SYSTEM PACS 1.4 (FDA UDI B403IQ140).

# iQ-WEBX REPORT CONVERTER

The optional iQ-WEBX REPORT CONVERTER module uses a state-of-the-art algorithm to automatically convert and transmit DICOM Structured Reports and HL7 text reports between information systems and iQ-WEB.

## GENERAL

- Compatible with virtually any HL7 compliant EMR, HIS, RIS or practice management system
- Supports Latin-1 ext. A character set

## INPUT

- Receives HL7 ORU^R01 messages (see HL7 conformance statement for iQ-WEBX REPORT CONVERTER)
- Queries for incoming DICOM Structured Report (see DICOM conformance statement)
- Supports one report per message

## OUTPUT

- Sends DICOM Structured Report to iQ-WEB (PACS)
- Sends HL7 ORU^R01 to any HL7 compatible Information System (HIS / RIS / EMR)
- Sends HL7 ACK messages to acknowledge the report has been received

## OUR PRODUCTS FOR YOUR IMAGING NEEDS

iQ-SYSTEM PACS

iQ-RIS

MED-TAB™

Full featured, reliable and affordable PACS

Smooth radiology information system

Superior portable image analysis



Stamp of sales partner



IMAGE INFORMATION SYSTEMS EUROPE GMBH

LANGE STR. 16 | 18055 ROSTOCK | GERMANY

TEL. GER: +49 381 496 5820 | FAX GER: +49 381 496 582 99

TEL. US: +1 704 323 6663

WWW.IMAGE-SYSTEMS.BIZ | INFO@IMAGE-SYSTEMS.BIZ